

The Company

The Erftverband is a public corporation for regional water management. Its overall area of operations comprises 4,216 km².

The Erftverband plans, builds and operates groundwater measurement facilities, wastewater treatment plants, stormwater basins and floodwater retention reservoirs. It maintains the water courses in the Erft river catchment area.

Functions performed in the entire area

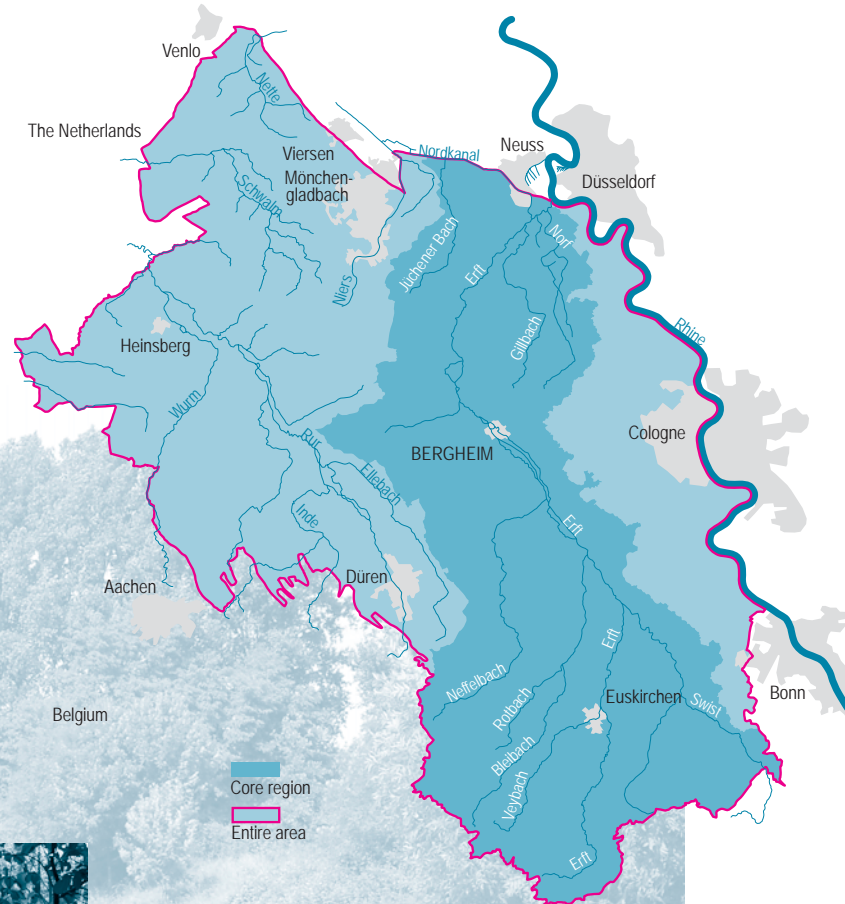
- Research and surveillance of water management conditions within the Rhenish brown coal district
- Management of groundwater
- Protection of wetlands
- Securing water supply of 2.7 million people

Additional functions within the core region

- Maintenance and renaturation of surface waters
- Flood protection along the Erft and its tributaries
- Wastewater treatment and sewage sludge disposal for approximately 1.2 million people
- Rehabilitation, maintenance and operation of sewer networks



Erftverband
Am Erftverband 6
50126 Bergheim
Germany
Tel 0049 2271 88 0
Fax 0049 2271 88 1210
info@erftverband.de
www.erftverband.de



The Erftverband at a Glance

2011



